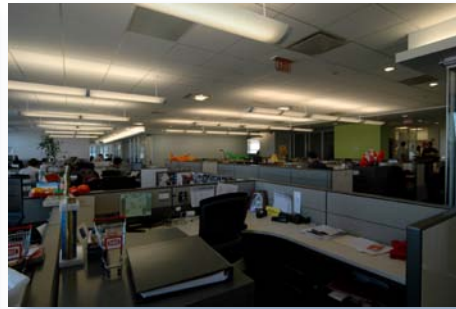


Bain & Company Corporate Interior

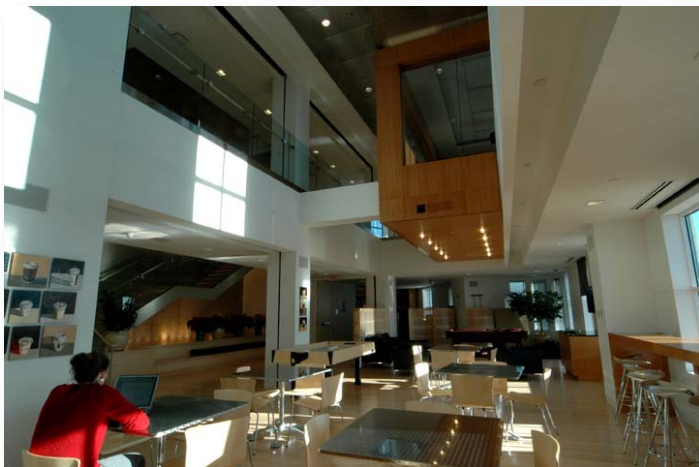
Boston MA



Architect: Gensler
Completed: 2004

This Boston-based corporate interior was meant to be elegant, comfortable and bold. For aesthetics, economy, and ease of maintenance we employed energy efficient, long life, and excellent color rendering lighting sources. Lounges were strategically located near curtain walls for shared enjoyment of light & city views. Daylight harvesting sensors were located at all open offices adjacent to glazed curtain walls. Illuminance data was collected by a dimming & control system and at pre-determined daylight intensity thresholds, lighting scenes were activated causing dimming ballasts integral to the direct/indirect pendants to modulate output. For added comfort illuminated vertical surfaces & glowing stepped soffits were

used to offset high contrast ratios created by daylight penetration. To reveal scale & grandeur the main architectural feature, a four-story public stairwell, was sculpturally illuminated from both above & below. Our goal was to develop lighting solutions that put the emphasis on light rather than luminaire.



This project was awarded a 2005 International Illumination Design Award.